

Community Partnership Major Capital Program Application

February 07, 2023

The CENTENNIAL GARDEN REHABILITATION PROJECT



...a legacy we are now entrusted with.



ROCKCLIFFE PARK FOUNDATION



CONTENTS			
1.0		ROCKCLIFFE FOUNDATION	3
2.0		EXECUTIVE SUMMARY	4
3.0		WHY THIS PROJECT?	5
	3.1	SUPPORT FOR THE PROJECT	5
4.0		OVERVIEW	7
	4.1	STATE OF DISREPAIR	7
	4.2	VISION	11
	4.3	MISSION	12
5.0		CORE VALUES	12
	5.1	START/COMPLETION DATE	13
6.0		COMMUNITY ACCESS PROFILE - DEMOGRAPHICS	14
7.0		BENEFITS TO THE COMMUNITY	14
	7.1	SOCIAL	14
	7.2	ENVIRONMENTAL	16
	7.3	HERITAGE	16
	7.4	ECONOMIC	18
8.0		GOVERNANCE STRUCTURE	19
9.0		COMMUNITY ENGAGEMENT PROCESS	19
	9.1	COMMUNICATIONS PLAN	19
10.0		OPERATIONAL PLAN - MILESTONES/EXPECTED DATES	20
11.0		LOGICAL FRAMEWORK	22
12.0		FINANCIAL PLAN - SUMMARY	24
	12.1	SUMMARY BUDGET WITH COST ESTIMATES BY YEAR	25
13.0		PERFORMANCE MEASUREMENT AND KEY INDICATORS OF SUCCESS OVER THE THREE-YEAR LIFE OF THE BUSINESS PLAN	26
14.0		RISKS AND CHALLENGES MITIGATION	27
		APPENDICES	
	A	PRELIMINARY PLAN FOR CENTENNIAL GARDEN REHABILITATION PROJECT	28
	B	ESTIMATED COST OF CONSTRUCTION, DAVIS LANDSCAPING	32
	C	BIOGRAPHY OF HUMPHREY CARVER	46
	D	BIOGRAPHY OF GERALD LAJEUNESSE	48
	E	BIOGRAPHY OF LINDA DICAIRE	48
	F	STATEMENT BY PRINCIPAL OF ROCKCLIFFE PARK SCHOOL	49



1.0 ROCKCLIFFE PARK FOUNDATION

The Rockcliffe Park Foundation is applying to the Community Partnership Major Capital Program for \$555,937.00 to cover 50% of the cost of rehabilitating and updating the Centennial Garden.

Rockcliffe Park Foundation
info@rockcliffeparkfoundation.org
25 Westward Way
Rockcliffe, ON
K1L 5A8

Primary contact:
Jane Panet
janepanet@sympatico.ca
Member of the Board of Directors
The Rockcliffe Park Foundation
45 Pond St.
Ottawa, ON
K1L 8J1
Mobile No.: 613-277-5618
Home No.: 613-745-0666

Team Members:
Sarah Baxter, Chair, Rockcliffe Park Foundation (RPF)
Ryan Kilger, Vice Chair, RPF
Jane Panet, Member of the Board of Directors, RPF
Marilyn Collette, Member of the Board of Directors, RPF
Linda Dicaire, honoured as a Fellow of the Canadian Society of Landscape Architects
Gérald Lajeunesse, BSc., B.A.P., FCSLA
Additional members will be added to the team with expertise in project management, public relations, event planning, fundraising once City funding has been secured.

The Rockcliffe Park Foundation (Charitable Registration: 893127365 RR0001) is a registered charity with a volunteer board, established by Rockcliffe residents in 1997. The Foundation's role is to oversee, raise funds and provide grants to support community programs, events, and initiatives in three core areas of activity: community building, heritage, and environment. Each year, the Foundation provides the Rockcliffe Park Residents Association (RPRA) with an average \$30,000 to pay for programs which the RPRA administers. The funds are flowed through the City of Ottawa. The Rehabilitation of the Centennial Garden Project meets the criteria for all three of the Foundation's mandate areas: community building, heritage, and environment.



2.0 EXECUTIVE SUMMARY

The Centennial Garden is the center piece of a beautiful green space in the heart of Rockcliffe Park Village. The Garden, and the adjacent Jubilee Garden, are north of Mariposa Avenue, east of Springfield, and west of Buchan Road. Together, they make up an approximately 159 by 109 metres of green space called The Village Green. The City of Ottawa owns The Village Green. The Stone Circle, which is the centerpiece of the Centennial Garden, was built to honour the 100th anniversary of the founding of Canada.

The Circle is in a state of disrepair having received virtually no maintenance since it was built in 1967. Without rehabilitation, the Circle and the surrounding green space are under-utilized as a recreational destination and without upgrading will continue to decline as a valued public space. The Stone Circle's heritage value as a commemorative site honouring Canada's 100th anniversary will also be lost. Five of the ten sugar maples planted to represent Canada's 10 provinces have died and been cut down. Much of the decorative surface of the Centennial Garden has been destroyed by winter snow plowing and tree root encroachment resulting in tripping hazards, and both the Stone Circle and surrounding grounds are infested with invasive and noxious weeds.

The Garden's sorry state discourages people from visiting and enjoying the surrounding natural environment. Insufficient recreational and natural green spaces within cities is one of the biggest challenges of densely populated urban environments today. As cities become more densely populated, such spaces become vital to the physical health and psychological well-being of their residents.

The Rockcliffe Park Foundation is seeking to raise \$1,111,874 to rehabilitate the Centennial Garden to its former greatness as a magnificent commemoration of Confederation. The Foundation proposes that 50% of the funds required come from the Community Partnership Major Capital Program, and 50% be raised by the Rockcliffe Park Foundation. on a cost-shared basis. The Foundation is confident that the strong support that exists for this rehabilitation ensures that it will be successful in raising funds from local organizations, foundations, the private sector and other levels of government.

The Preliminary Plan for the Rehabilitation of the Centennial Garden (Appendix A) has been approved in principle by Rockcliffe's two community organizations, The Rockcliffe Park Foundation (February 23, 2022) and The Rockcliffe Park Residents Association (March 16, 2022). Rideau/Rockcliffe Councillor Rawlson King fully endorses this plan and would like to see its implementation expedited.

A revised version of the Plan incorporating feedback from the City of Ottawa, and the application Business PI to the City's Major Capital Program, including construction and promotion costs, were approved by the Rockcliffe Park Foundation on January 25, 2023. The project will culminate in a grand rededication of the Centennial Garden in August 2026. It is our hope that Canada's Governor General Mary Simon could preside over this official ceremony and celebration, open to all Canadians.



Overall, this Business Plan sets out how the rehabilitation of the park will bring significant economic, social, environmental, and heritage benefits to the greater Ottawa community and restore pride in our heritage and green spaces.

3.0 WHY THIS PROJECT?

3.1 SUPPORT FOR THE PROJECT

Various Guidelines and Statements lend weight to the Importance of this Reconstruction. Such support extends well beyond the Rockcliffe community. The Canadian Society of Landscape Architects has stated, “The Centennial Garden is an example of how landscape architects shape cultural landscapes – it was designed by exceptional landscape architects Humphrey Carver and Don Graham, has served the local community for over 50 years and celebrates one of Canada’s milestones and represents a pre-eminent example of design.”

“...this garden has to be restored and preserved. I support these efforts wholeheartedly. We have too many places of destruction.”
Cornelia Oberlander CC, 2017

In 2017, Cornelia Oberlander CC, one of Canada’s foremost landscape architects wrote, “...this garden has to be restored and preserved. I support these efforts wholeheartedly. We have too many places of destruction.”

Ottawa 20/20 Principles and **Provincial Policy Statement, 2020** recognize the importance of protecting a city’s heritage. The **20/20 Principles** specifically states

that “one of the hallmarks of strong livable communities which promote and enhance human health and social wellbeing, includes, where possible, the conservation of heritage sites.” This is echoed in **The Provincial Policy Statement** which provides municipalities in Ontario with policy direction on matters related to cultural heritage resources. It states, “significant cultural heritage landscapes shall be conserved.”

The City of Ottawa’s first-ever combined **Parks and Recreation Facilities Master Plan | Engage Ottawa (PRFMP)** in support of the new Official Plan (OP), contains recommendations about new and existing parks and recreation facilities to meet Ottawa’s projected growth. From official figures, Ottawa is projected to increase by 402,000 persons for a population of almost 1,410,000 persons by 2046. As density increases and urban intensification takes hold, per person access to parks and recreational space will be reduced. Poised for a growing population, maintaining parks and their recreational services to meet these needs is a real and pressing concern.

“Significant cultural heritage landscapes shall be conserved”
The Provincial Policy Statement

The **Master Plan** addresses this greater pressure on parklands by stating “without parkland, the indoor and outdoor recreational facilities that residents expect and would like to see in their

Community Partnership Major Capital Program Application The Centennial Garden Rehabilitation Project



neighbourhoods cannot be provided.” The City’s parkland provision strategy focuses on retention, optimization and acquisition. Further to this focus **The Plan** states, “The City must protect the investments it has made into existing parkland.” Further to this it states, “To address a growing population, the quality, accessibility and sustainability of existing parkland is to be enhanced where a need is identified and where space and funds are available.” (PRFMP 7.2 p.54).

Rockcliffe’s own **Heritage Conservation District Plan** requires it to respect the cultural heritage value of the Village Green landscape and the existing character of the surrounding landscape.

As well as being important from a landscape architectural and artistic point of view, it is a well-loved gathering space for young and old. Rockcliffe Park School Principal Heather Mace says, “Centennial Garden is one of the outdoor learning spaces that our staff have identified for use by our classes.” (Letter, Appendix F, page 49)

The thousands of dollars’ worth of volunteer time that have already been devoted to saving this historic site is evidence of the kind of community support that exists for this project. Two landscape architects developed a preliminary plan free of charge. Many hours have been spent writing reports, articles and attending meetings.

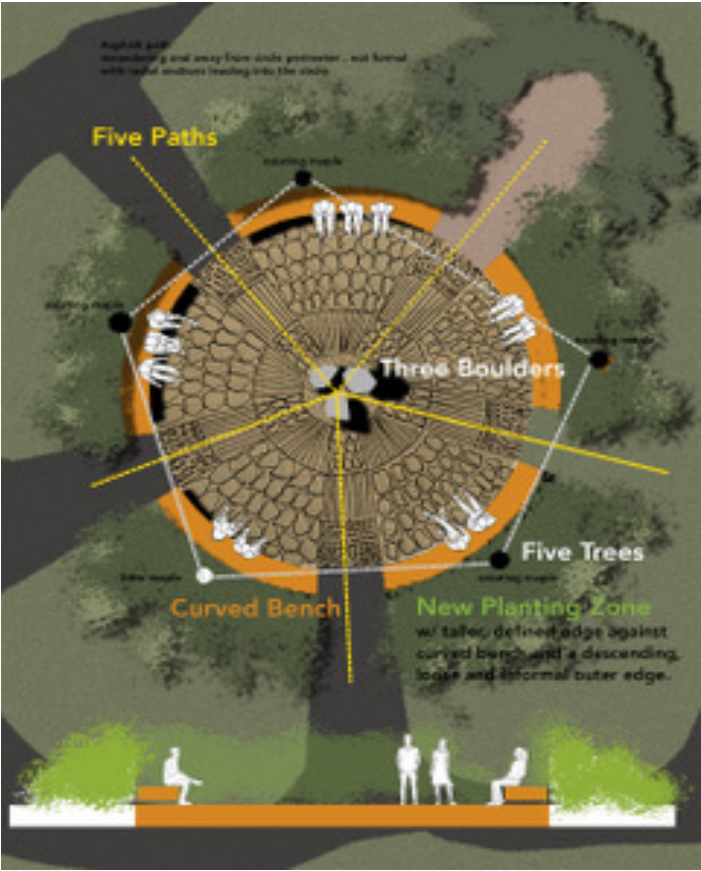


Figure 1: Schematic Representation of the Rehabilitation Plan



4.0 OVERVIEW

4.1 STATE OF DISREPAIR

The Centennial Garden was designed by internationally acclaimed architect, Humphrey Carver, CC (See bio in Appendix C) for the 100th anniversary of Canada becoming a nation. The work consists of a large circle, approximately 90 feet in diameter, defined by large field stones carefully integrated with plant material around its edges, and at the centre of the circle sit two large boulders – a likely reference to the two Canadian territories that existed at that time. The main body of the circle is divided into 20 rays or ‘pie shapes’ radiating out from the centre, in two concentric circles making up 20 sections which contain alternating, contrasting surfaces of pebble (river stone), flagstone, and chip (replaced with asphalt over time). The number 10, surely a reference to our 10 provinces, is repeated in the number of sugar maples that complete the work. Five trees were planted within the rock circle, five on the outside.

The site has received virtually no maintenance since it was built in 1967 and is in a state of disrepair. Winter clearance without guidance has resulted in a pathway being plowed right across the middle, transecting the site, causing damage to the paving stones and to the five memorial benches which circle the site. The plow has sometimes hit the benches, hooked and lifted surface material from the centre of the circle, and in early spring, compaction by heavy equipment combined with the freeze-thaw cycle, has damaged surfaces. Uneven surfaces have resulted in unsafe and uncomfortable walking with tripping hazards. Of the 10 sugar maples initially planted only five remain. Over time, the Stone Circle and the surrounding green space have become infested with burdock, gout weed, knotweed, European buckthorn, and other noxious species.

The Preliminary Rehabilitation Plan includes reconstruction of the decorative stone surface, rerouting of the snowplow, a new fixed circular bench framing the outer edge of the Centennial Garden, removal of weeds, addition of a third boulder in the centre of the circle, and new plant material added to the outer ring of stones. The surrounding green space also needs attention. Bushes and trees need pruning. Scraggly shrubs are well past their prime and need to be renewed; the area top dressed and, seeded. Two areas once planted as Hosta beds need to be dug out and seeded. Noxious weeds need to be removed. (See Appendix A).

Pathways & Centennial Garden: Damage caused by the snowplow can be prevented by building a new asphalt path on the exterior of the Centennial Garden thereby keeping the snowplow off the decorative stone. It is recommended that the pie-shaped pattern of ten alternating flagstone, river stone, and chip be reinstated, and that concrete replace the asphalt. It is further proposed that the concrete be sandblasted to expose imbedded aggregate.

Central Representative Boulders: Although no reference in the literature exists on the two central boulders representing Canada’s two territories, that is how they have come to be interpreted which is understandable considering that the garden was built to celebrate Canada’s Centennial and there were only two territories at the time. It is recommended that a third medium-sized boulder, taken from somewhere on the property, be added to better reflect our existing geo-political map.



Trees: Four of the five sugar maples planted inside the Centennial Garden have died and been cut down. One in the later stages of its life cycle remains. It is recommended that this tree be removed and that the areas where the five trees once stood be covered in decorative stone. The essence of the original plan will be maintained by locating five sugar maples outside the ring of boulders far enough away from the Centennial Garden that their roots will not damage the decorative paving and inside the new asphalt path. Four of the original maples in the outside ring are still in good condition. An additional maple would need to be planted in the outside ring to complete the circle of 10.

Benches: Five memorial benches are now situated on top of the decorative paving in the Centennial Garden. Although the City has restored the benches, they are still in rough shape. One of the original plaques has been lost. It is recommended that the five benches be repurposed outside the circle and that a new 360-degree circular bench be built and securely anchored, with openings for each of the five pathways to provide access to the inner circle. The new benches will be constructed out of noble materials such as high-quality metal, stone and wood. A circular bench will reinforce the sense of a Centennial Garden and the cyclical nature of life.

Outer Ring of Boulders: An outer ring of boulders interwoven with plant material surrounds the Centennial Garden. Much of this plant material consists of invasive weeds such as burdock or of tired yew that have outlived their life cycle. It is recommended that the invasive weeds, and shrubs that have outlived their life cycle, be removed from the ring of boulders and that additional plants and shrubs be planted to refresh the appearance of the circle.

Lighting: Security in public parks is always an issue. It is recommended that soft lights wash upwards over the three central boulders, as well as from the underside of the new circular bench.

Greenspace: The greenspace surrounding the commemorative stone circle is in a state of neglect. Invasive species like goutweed have been allowed to run rampant. It is likely that the creators of the garden planted goutweed, orange daylily, and lily-of-the-valley to provide quick and carefree plantings. It is possible to keep large beds of goutweed under control by mowing. It is recommended that additional paths be mowed in the goutweed to create intriguing paths with a sharp-edged, cultivated appearance. No doubt young children would delight in exploring the pathways and perhaps even playing tag in them. Burdock, knotweed, and other invasive weeds should be removed. Three beds, two along Mariposa and one at the corner of Mariposa and Springfield, should be scraped bare and seeded with grass seed.

The Jubilee Garden, just to the east of the Centennial Garden, and the Centennial Garden are complementary spaces, one designed as a rectangle, the other as a circle. The Jubilee Garden was restored in 1997 and is a popular gathering site for ice skating in the winter, school classes, weddings, social gatherings, and croquet at other times of the year. The Rockcliffe Park Foundation funds the maintenance of the Jubilee Garden. By contrast its sister garden to the west, not part of the restoration, has been neglected. The two gardens need to be better linked. The short path linking the two gardens needs to be opened up by removing stones blocking entrance to the Centennial Garden and by relocating pinecone sculptures by Floyd Elzinga slightly south, so they do not block the path. These two garden spaces, which commemorate and honour different chapters in our history, would work well together if the Centennial Garden was brought back to its former grandeur and they were better connected.



Figure 4: Decorative stone surface showing weed encroachment



Figure 2: Decorative stone surface destroyed by winter plowing and tree root encroachment



Figure 3: Five of the ten sugar maple trees representing the 10 provinces have died and been cut down



Figure 5: Gout weed taking over the Centennial Garden



Figure 6: Ruts caused by cars parking on the verge of the Centennial Garden



Figure 7: Burdock



4.2 VISION

Humphrey Carver’s vision for the Centennial Garden was a unique, artistic arrangement of stones and boulders taken from the site and 10 sugar maples planted in a ring to celebrate Canada’s Centenary in 1967. Essential to his vision was the siting of the stones and boulders in a green oasis park setting.

The vision of Rockcliffe Park Foundation is a greenspace in the heart of the Village that honours an important event in the country’s history, honours an internationally acclaimed architect, is a popular gathering place that inspires a sense of pride and community, gives visitors a chance to interact with the natural world and with each other, and that is recognized by tourists as a unique heritage space.



Figure 8: Prime Ministers Pearson and Diefenbaker at the Unveiling of Rockcliffe's Centennial Project



4.3 MISSION

The Foundation’s goal is to restore the Centennial Garden, with its centerpiece the Stone Circle, and bring it up to date as a cultural landmark, offering the greater Ottawa community and visitors’ multipurpose enjoyment and recreational activities.

The Rockcliffe Park Foundation commits to raising the necessary funds to restore and conserve the site as an artistic tribute to the founding of our country, to overseeing a competitive tendering process for the construction, to promoting the Centennial Garden to the greater Ottawa community and ensuring that it is featured as a major tourist attraction to visitors to Ottawa.

This Business Plan will guide every aspect of the Foundation’s anticipated expenditure of \$1,111,874 in grants identified to restore and protect the park over the years to come. It is our expectation that the activities described in the Business Plan will be adopted by the broader community working on the same goals and responsible investments.

5.0 CORE VALUES

- **Accessibility/Equity** - The Rockcliffe Park Foundation believes that all citizens, gender inclusive should be able to benefit from the Centennial Garden and the surrounding Greenspace. Thus, the redevelopment plan aims to provide all residents with equitable access to its open space, natural areas, benches and pathways within a diverse urban forest. The original rehabilitation plan developed by landscape architects Gérald Lajeunesse (Appendix D) and Linda Dicaire (Appendix E), both honoured as Fellows of the Canadian Society of Landscape Architects, is based on this belief.

The rehabilitation is seen as a way of reducing barriers to people’s usage while at the same time increasing high quality urban green space easily accessible by frequent, nearby transit service. The Centennial Garden is one block away from an OC Transpo stop. The design will be built to the City of Ottawa’s accessibility standards, ensuring multi-use pathways connect with intersections. An asphalt pathway will provide wheelchair-friendly access to the site. Soft lightening will ensure safe passage at night without being intrusive on the neighbourhood.

- **Community/Social** - A fundamental belief underlying the rehabilitation is that as cities become more densely populated, attractive outdoor spaces become vital to the physical and psychological wellbeing of their residents. Studies have shown an association between urban forest canopy and cooling micro-climates and mental and physical health.

Another core value animating the rehabilitation is the fact that when buildings/places are allowed to deteriorate they become susceptible to disrespect and sometimes vandalism. Restoring the garden will have a huge psychological uplift and discourage some of the undesirable behaviours that have taken place in the past. The Foundation envisages a wide range of recreational uses for the site for everyone to enjoy - old, young, and in between. For example, an older visitor or apartment dweller might find a quiet moment in a natural setting to read a book. Children might delight in discovering the shape and feel of the land sculpture, or exploring the paths cut through the goutweed.



Students may pursue outdoor education classes in the surrounding green space. (Appendix F). Families may gather for picnics. Yoga, under the trees is feasible, as are biking and dog walking.

- **Cost-Conscious Leadership** - The Foundation intends to accomplish its mission by keeping the construction and maintenance costs to a minimum. The Rockcliff Park Foundation will lead the fundraising campaign.
- **Open Communication** - The Foundation commits to communicate effectively and transparently with community leaders, the Rockcliff Park Residents Association, and the community at large.



Figure 9: Children exploring central boulders of the Centennial Garden

- **Legacy** - Overall, a commitment to a multifunctional space with leisure areas, recreational pursuits, meeting places with natural botanical areas for contemplation and enjoyment, a preserved heritage landmark and a place to contemplate the wonder of our country - a legacy for those to come.

5.1 START/COMPLETION DATE

The Rockcliff Park Foundation commits to raise 50% of the cost of updating the Centennial Garden contingent upon the City’s comparable commitment. It commits to begin fundraising as soon as a contract has been approved for 50% funding by the City, under the Community Partnership Major Capital Program which is expected to take place December 2023. A competitive tendering process would take place shortly afterwards. The rehabilitation project would culminate with a public dedication ceremony in August 2026, possibly presided over by Governor General Mary Simon, which would coincide with the 100th anniversary of the founding of Rockcliff and the unearthing of a time capsule buried in the Village Green.



6.0 COMMUNITY ACCESS PROFILE - DEMOGRAPHICS

The Centennial Garden rehabilitation will again advance the City’s **Parks and Recreation Plan 2022**, which aspires to ensure 2 hectares per 1,000 people (a) within a 5-minute safe walking distance of a public green space providing space for passive or active recreation, (b) within a 10-minute walking distance of two green public spaces, and (c) within a 15-minute trip by transit, a publicly owned natural park.

The City of Ottawa’s **Greenspace and Urban Facilities Master Plan** aims to provide all residents within Ottawa’s urban boundary with equitable access to a connected network of natural areas, green open spaces, pathways and parks. The needs assessment in the development of the Master Plan similarly outlines how the Rockcliffe area is meant to provide an average of 1.1 to 2 hectares of parkland for every 1,000 people. Thus, a revitalization of the Centennial Garden will permit an increase in usage and assist in supplying this evolving need.

Residents of Rockcliffe and the broader communities within a “15-minute trip by transit” to the Garden would encompass those of Rockcliffe Park (pop.1,521); Manor Park (7,521); New Edinburgh (3,878); Linden Lea (2,152), Sandy Hill (14,526), and Vanier (118,806).

7.0 BENEFITS TO THE BROAD COMMUNITY

Urban greening in an historical context provides a range of essential benefits. Social, environmental, economic, and heritage benefits will accrue to the City of Ottawa.

7.1 SOCIAL

A recent national study conducted by Park People, June 2020, found that 82 per cent of Canadians said parks had become more important to their mental health during the COVID-19 pandemic, and 55 per cent of cities said park use had increased. For many Ottawans, spurred by the pandemic, physical activity in parks has become an integral part of everyday life.

Japanese culture, with its ancient practice of forest bathing, has long recognized the psychological and physical benefits of interacting with the natural world. More recently, a growing number of studies have found that people who spend time sitting or walking in a forest have lower cortisol levels, blood pressure and heart rates. In short, nature brings calm to the human body and spirit.

The Centennial Garden is a popular gathering place for residents of Rideau Rockcliffe Ward and beyond, but it is not attracting the number of people it could because the center piece of the park is derelict and the green space neglected. In fact, its neglect fosters a lack of respect for the space when it could, if it were in prime condition, inspire a stronger sense of community pride and belonging.



Figure 10: Children playing in the adjoining Jubilee Garden



Figure 11: Volunteer cleanup crew, 2022

Volunteer clean-up crews annually gather to pick up litter, weed, or do light pruning. Rockcliffe Park Public School conducts outdoor classes in the Centennial Garden. Other neighbourhood schools would be encouraged to do the same. A new fixed circular bench would lend itself to outdoor classroom instruction.

Gardening together also builds stronger community. The Ottawa Garden Club whose members come from across the greater Ottawa area has offered to contribute and plant hostas around the Stone Circle.



7.2 ENVIRONMENTAL

Current global challenges such as climate change, environmental degradation, and the COVID-19 pandemic have resulted in increased awareness of the importance of urban trees and green spaces. There is also a growing body of research that shows the association between urban forest canopy and cooling micro-climates to the mental and physical health of its inhabitants.

Habitat structure: Moreover, environmental mitigation features are becoming better understood in relation to improved habitat for plant and animal species. Rehabilitation activities such as planting native species and improving structure, can provide a more diverse and suitable habitat for a wide variety of plant and animal species. By restoring damaged or degraded areas of a park, it can help support biodiversity and promote healthy and thriving ecosystems.

Carbon sequestration: Trees and other vegetation in parks can absorb carbon dioxide from the atmosphere as they grow, helping to mitigate the effects of climate change. A park rehabilitation that includes the planting of trees and other vegetation can help to sequester carbon and contribute to climate change mitigation efforts.

Enhanced water quality: Restoring natural habitats and vegetation in a park can help to filter and clean stormwater runoff, improving the overall water quality in the area.

Air quality improvement: new vegetation and increases in the number of trees can help to clean and filter the air, reducing the harmful effects of pollutants in the atmosphere. The benefits to the health of the ecosystem and to human health can be significant.

The Centennial Garden, and its adjoining Jubilee Garden, is a very valuable jewel in Ottawa’s network of green spaces and a haven for local biodiversity, natural functions, indigenous species and ecosystems – providing an opportunity to observe and connect with nature. It is populated with mature white pines, maple trees, a few apple trees, and a grove of acacia trees. In spring, a carpet of bright blue scilla light up the acacia forest. The effect is stunning, enchanting, and inspires a love of green spaces and the natural world. Restoring the Centennial Garden would bring back people to experience this unique moment in the yearly life of the park.

7.3 HERITAGE

The Centennial Garden is a unique commemorative work of land art. Rockcliffe historian, Martha Edmond, says of the landscape sculpture, “It is a lasting symbol of the man and his vision, and a legacy we are now entrusted with.” The Canadian Society of Landscape Architects, and one of Canada’s most famous landscape architects, Cornelia Oberlander CC, have lobbied for its rehabilitation. That it has been allowed to deteriorate so badly reflects poorly on how we value our heritage. Rehabilitation honours this legacy.

The City of Ottawa recognizes the heritage value of its parks. The **Master Plan** states that as part of the City’s fabric, “the value of parks continues to appreciate over time in terms of their ecological heritage and cultural land value contributions.”

Some Ottawa communities have communicated their desire to have the City of Ottawa, “recognize the unique character of heritage parks and that they require different standards of furniture, lighting, pathways, horticulture, and maintenance including control of invasive species,



higher levels of floriculture and historically appropriate choices of trees, shrubs and plant materials. Each heritage park should have an individual maintenance plan developed.” Moreover, they have submitted a plea, “to ensure that the cultural heritage values of these built heritage landscapes be maintained through ensuring that overgrowth of bordering wooded areas be trimmed and thinned each year to remove invasive species of shrubs, vines or trees to encourage unimpeded reciprocal views between the surrounding heritage properties and streets and heritage parks themselves.” (***Glebe Community Association letter to the City of Ottawa***)

This rehabilitation initiative will significantly enhance the heritage value of the Centennial Garden by bringing attention to its cultural and ecological heritage history and improve the resilience of the heritage value to its local residents and adjacent communities.



Figure 12: Carpet of blue scylla lights up acacia grove



Figure 13: Charming bird sculptures with dedication plaque "For children of Rockcliffe these birds and chipmunks executed by Art Price with love from the children of Wilson and Henriette Southam, 1967"

7.4 ECONOMIC

Parks, gardens, and natural green spaces are an essential part of any city’s infrastructure. In most great cities, they have become a defining feature. New York is known as much for Central Park as for its architectural wonders; London for Hyde Park; Paris for Bois de Boulogne; and Ottawa, a G7 capital, is no exception with its many green spaces. Small parks also play a significant role in defining a city’s character and quality of life.

Providing attractive and adequate recreational opportunities ensures that the economic talent of well-educated and qualified residents stays in our community. Similarly, opportunities for visitors also figure into a particular segment of the local economy. When the centerpiece of the park is returned to its former grandeur and is no longer derelict and its surrounding green space upgraded, the Centennial Garden will once again become an important and valuable Ottawa landmark, fostering pride in its citizens and restoring a tourist attraction for City visitors.

Without sufficient recreational areas close by or within residential areas, the economic, environmental and social consequences could be serious as these green spaces play an important role in the daily lives of Canadians.



8.0 GOVERNANCE STRUCTURE

The Centennial Garden along with the Jubilee Garden make up the Village Green. The Village Green is owned by the City of Ottawa and will continue to be owned by the City. The Rockcliffe Park Foundation funds the maintenance, and the Rockcliffe Park Residents Association oversees the delivery of maintenance services for the Jubilee Garden. The average annual cost of maintaining the Jubilee Garden is more than \$8,000. This amount is totally funded by the Rockcliffe Park Foundation. This is a clear demonstration of how much the residents of Rockcliffe value the greenspace at the heart of their community. Also, evidence of their attachment and support for this park is that volunteers gather regularly to clean up and weed this space. It is proposed that the City of Ottawa continue to mow, prune, and remove dead trees from the Centennial Garden, as well as maintain a winter path through the garden, circumventing the Stone Circle. Under the direction of the Rockcliffe Foundation, with support from the Rockcliffe Park Residents Association, volunteers would continue to weed, and do some light pruning.

9.0 COMMUNITY ENGAGEMENT PROCESS

Once funding from the City has been secured, it is proposed that the Rockcliffe Park Foundation organize at least one public meeting to present the Centennial Garden Rehabilitation Plan, to obtain feedback and engender support for it. It is proposed that this meeting be widely advertised throughout the city to community organizations, to garden clubs and to arts and heritage associations.

9.1 COMMUNICATIONS PLAN

A detailed Communications Plan will be developed to support the roll out of the project once it is approved. A series of articles about the project has already appeared in the Rockcliffe News. Progress on the rehabilitation is a frequent topic at meetings of the Rockcliffe Foundation and the Residents Association. The Communications Plan will include articles about the project which will be submitted to community newspapers across the City. It will propose that information about the project be disseminated via television and various forms of social media. Once the rehabilitation is completed, it is proposed that gardening, arts and tourism magazines representatives be invited to the grand rededication of the site with the aim of obtaining widespread publicity. Ongoing fundraising activities and events will further stimulate interest in the project.



10.0 OPERATIONAL PLAN – MILESTONES/EXPECTED DATES

Specific activities that must take place and have a cause-and-effect connection with the impact we are trying to achieve. The Project’s resources will be focused on the following activities:

OPERATIONAL PLAN WITH WORK SCHEDULING					
ONGOING SINCE 2019	JANUARY 2024	MAY 2024	SEPTEMBER 2024 - NOVEMBER 2025	AUGUST 2026	OCTOBER 2026 ONWARDS
Public Consultation – Communications Plan	Fundraising Plan developed for 50% of Costs	Architectural Drawings, Tender Call and Implementation of Fundraising Plan	Rehabilitation Work; Fundraising	Public Rededication	Maintenance and Monitoring

Activity 1.0: Public Consultation

Consultation with Rockcliffe residents has been ongoing for many years. In the Spring of 2022, two organizations representing Rockcliffe residents the Rockcliffe Park Foundation and the Rockcliffe Park Residents Association approved in principle a Preliminary Plan for upgrading the Centennial Garden as drawn up by the two landscape architects. An open public meeting that is heavily advertised beyond the Village of Rockcliffe will be held once the City support has been secured. This, along with online feedback, will give people a further opportunity to have their voices heard. These steps will ensure the Plan and budget align with the mission, vision, values and with the strategic direction of the Community.

Activity 2.0: Fundraising Plan Developed for 50% of Costs

- The budget assumes that the City of Ottawa will approve 50% of the required funding. The Rockcliffe Park Foundation, pledges to fund 50% of the cost-sharing of the project. Fundraising for this 50% will begin as soon as a contract has been approved for 50% funding by the City.
- A detailed and robust fundraising plan for grants, donations and sponsorships will be developed, following the cost-benefit model outlined (economic, environmental, social and heritage returns) which will ensure the project’s financial sustainability.

Activity 3.0: Tender Call & Implementation of Fundraising Plan

- Preparation of the tender call for the Rehabilitation work will be prepared in concert with the City of Ottawa.



- Tender Call to city landscape companies will be actioned with the selection of the winning bidder contacted for the rehabilitation work.
- The Fundraising campaign will be implemented with events, and social and print media outreach will promote the need and drive donations for the 50% shared cost.

Activity 4.0: Rehabilitation Work with the Successful Tender Call Recipient:

- **Stone Circle** - Replacement of the decorative surface in the centre of the circle with stones set into concrete. An additional boulder representing our newest Territory will be added to the centre of the circle.
- **Pathways** - A new asphalt path on the south-west exterior side of the Centennial Garden to be constructed connecting the path from Mariposa to the path to Springfield North.
- **Trees** - Planting of six additional sugar maple trees will complete the original circle of ten outside of the inner circle. Trees and shrubs will be pruned, dead trees removed, three beds cleaned up and seeded with grass seed.
- **Benches** – The five original benches will be repurposed within the Village Green. A new, custom built 360-degree circular bench in six sections will be built and installed between each of the five pathways leading to the central circle.
- **Outer Ring of Boulders** – Removal of invasive weeds and shrubs and the addition of new plants and shrubs will be planted to give new life to the outer ring of boulders. Some of the boulders will be realigned to better reflect the circle. As well, a couple of boulders will be moved to open the circle to the pathway leading to the Jubilee Garden. Pine sculptures by Floyd Elzinga will be shifted south so as not to block the pathway between Centennial Garden and Jubilee Garden and small pines planted near them to illustrate the regeneration theme of the sculptures.
- **Lighting** – Electrical conduit will be laid under the decorative stone circle in the event at some future date a decision is made to install 3 soft lights to shine on the three central boulders and six lights under the circular benches to illuminate the central boulders.
- Park lighting will be upgraded to meet City of Ottawa standards.

Activity 5.0 – Public Promotion – Planning, Preparation for Garden Rededication

- An Official Ceremony to rededicate the Centennial Garden, planned with invitation list and media guests.

Activity 6.0 – Ongoing Maintenance and Monitoring

- A fully developed Plan for post rehabilitation requirements will be developed with appropriate levels of responsibility for the City and the Rockcliffe community. The Plan will ensure the maintenance of the trees, the pathways and general upkeep of the overall Centennial Garden.



11.0 LOGICAL FRAMEWORK

The Logical Framework sets out the relationships between the activities and assumptions that lead to the rehabilitation goal and expected Impact. The Logical Framework statements help to better understand how the actions taken to address the Centennial Garden deterioration lead to the intended outcome results. The Framework also considers the risks and threats to achieving the intended results and provides suggested mitigating strategies.

CENTENIAL GARDEN REHABILITATION PROJECT LOGIC FRAMEWORK	NARRATIVE PROJECT SUMMARY with EXPECTED RESULTS	OBJECTIVELY VERIFYABLE INDICATORS	MEANS of VERIFICATION	ASSUMPTIONS/RISKS
GOAL/IMPACT	To restore the Centennial Garden (CG) as a valuable Cultural Landmark, offering the greater Ottawa community and visitors to Ottawa multipurpose enjoyment and recreational opportunities.	CG brought up to date and up to code according to Preliminary Rehabilitation Plan and cost estimate Increase in the # of visitors/events	Reports to the City of Ottawa, RPRA & Rideau/Rockcliffe Riding Association Tourist literature	Sufficient public value generates broad community interest and buy-in to implement the rehabilitation. Risk: Lacklustre incentive and interest to support this initiative. Mitigation: Public participation events to capture community support
OBJECTIVE 1/OUTCOME 1	Public Consultation & Community Fundraising with result that sufficient funds are raised from the target community-at-large	Total funding goals reached including 50% of total cost acquired from broad community of private sector, citizens, foundations	Dedicated bank account in receipt of funding goal	Broad community targeted will give generously and adequately Risk: Difficulties in reaching goal - Less than 50%. Mitigation: Publicity and Promotion Events via Campaign

**Community Partnership Major Capital Program Application
The Centennial Garden Rehabilitation Project**



CENTENIAL GARDEN REHABILITATION PROJECT LOGIC FRAMEWORK	NARRATIVE PROJECT SUMMARY with EXPECTED RESULTS	OBJECTIVELY VERIFYABLE INDICATORS	MEANS of VERIFICATION	ASSUMPTIONS/RISKS
OBJECTIVE 2/OUTCOME 2	Rehabilitation Plan successfully contracted according to estimates resulting in CG restored as a well-loved gathering space for young and old & heritage value of the Garden preserved	Higher proportion of activities/participation by residents of all ages. Increase in heritage value, CG included in places to visit in tourism and garden promotional literature Detailed Rehabilitation Plan in place and implemented	Contractor's Report Reports of increased type / number of events/resident activities Media coverage of rehabilitation # of in-kind volunteers' hours	The CG revamped and given new life & restored beauty will attract increased usage for a variety of activities. Risk: Disappointing increase Mitigation: Post-rehabilitation Programming by the RPRA & volunteers
OBJECTIVE 3/OUTCOME 3	Communication and wider awareness of, and use by, the greater Ottawa community of the CG	Media coverage of the Ceremonial Event to Rededicate the Centennial Garden	Survey comparison of before and after awareness and use Publicity materials, RPRA newsletter	Low level of public interest Risk: Low. Mitigation: Dedicated focus on creating media coverage
ACTIVITY 1	Identify partners, grant-providers, community supporters and build relationships and convene Public Consultation meeting(s) with use of social media, publicity etc	Lists available of Grantmakers, supporters and relationships enhanced	Lists created - electronically	Timeline: January 2024
ACTIVITY 2	Fund-raising campaign, events, and media outreach	Planned events completed and campaign successful	Fund-raising reports, funds-meet goals	January 2024-Sept.2026
ACTIVITY 3	Architectural Drawings, Tender for Contract work	Contractor proposals and selection.	Contractor selected	May 2024-Sept 2024
ACTIVITY 4	Rehabilitation construction work contracted & completed	Work completed according to Contract	Supervision reports & end-of-contract report	September 2024 -November 2025
ACTIVITY 5	Public Promotion of the Garden via Celebration Event and deliberate publicity	Garden receives 100% uptick in people visiting and using after one year	Simple Survey using one month comparator	August 2026



12.0 FINANCIAL PLAN - SUMMARY

12.1 SUMMARY BUDGET WITH COST ESTIMATES PER YEAR

Success in achieving the goals of this Business Plan depends upon the Project raising and spending at least \$1,111,874 over three years on the activities described herein. It will depend on the City of Ottawa approving a grant representing 50% of the upgrading costs of the Centennial Garden, the Rockcliffe Park Foundation raising the remaining 50% from other levels of government, organizations and foundations, and from the private sector prior to the start of implementation.

The rehabilitation work in this estimate is based on preliminary costs provided by Davis Landscaping. This Business Plan is based on a conceptual landscape design. (See Appendix B). Final pricing would occur once approved detailed landscape drawings issued for construction has been provided by a qualified landscape architect and approved by the City of Otta

**Community Partnership Major Capital Program Application
The Centennial Garden Rehabilitation Project**



12.1 SUMMARY BUDGET with COST ESTIMATES BY YEAR

FINANCIAL REQUIREMENTS BY YEAR

ACTIVITY \$ COSTS	2022-2023	2024	2025	2026	TOTAL 1	TOTAL 2
Activity 1: Public Consultation		\$500			\$500	\$500
Activity 2: Fundraising Plan	\$2,000	\$2,500	\$2,000	\$1,250	\$7,250	
Activity 3: i) Tender drawings		\$2,000			\$2,000	\$2,000
ii)Tender for Contract Work		\$50,000			\$50,000	\$50,000
ii)Fund-raising Campaign		\$5,000			\$5,000	
Activity 4: Rehabilitation Work with Tender Call Recipient		\$856,727.00			\$856,727.00	\$856,727.00
Additional Electrical Installation		\$35,100.00			\$35,100.00	\$35,100.00
Activity 5: Public Promotion				\$7,500	\$7,500	\$7,500
Activity 6: Formal Management		\$58,968.35			\$58,968.00	\$58,968.00
ii) Community Management			\$750	\$750	\$1,500	
iii) Community Monitoring			\$500	\$500	\$1,000	
iv) Volunteer Time (initial Plan)	\$7,500				\$7,500	
Sub-Total	\$9,500	\$1,010,795	\$3,250	\$10,000	\$1,033,045	\$1,010,795
Contingency (10%)					103,304.50	\$101,079
TOTAL 1: Total of all costs Total 2: Total of all costs minus those not covered by City in grey					\$1,136,350	\$1,111,874

Notes: 1) \$951,917 reduced to \$856,727 is minus the 10% built-in contingency on the Davis Estimate (Appendix B). The \$856,727 cost of rehabilitation is an estimate provided by Davis Landscaping (Appendix B), based on a conceptual design (Appendix A)



13.0 PERFORMANCE MEASUREMENT AND KEY INDICATORS OF SUCCESS OVER THE THREE-YEAR LIFE OF THE BUSINESS PLAN

Accountability for public financing, mixed with the need to achieve the project results, necessitates continuous monitoring of the planned expected results. Rockcliffe Park Foundation will use a Results-Based approach to periodically monitor and evaluate all investments funded under this project initiative, evaluate outcomes based on the success in implementing the rehabilitation and report back to the City, to grantees, sponsors, and the broader community. It will use a series of indicators for each level of results with a timeline for achieving them, based on the performance measurement Logical Framework (pp. 22) or logical chain of actions, leading to the goal.

This Framework will be used throughout the Project to iteratively manage the activities to make it possible to adaptively revise strategies in the face of underperformance. Findings from this evidence-based monitoring will be reviewed regularly and used to continuously learn and inform decision-making to keep the project on track and ensure success. To be risk adverse, the Foundation will review the rehabilitation tender call proposals and prioritize the best match with the results-chain identified in this Plan.

The following measures of success of this plan, comprise a partial list of the types of metrics that will be used to evaluate progress towards the success of the Centennial Garden rehabilitation. Ideally measures would be made by:

FINANCIAL: Effective Campaign to raise the required funds and careful management of the budget, including financial reviews of revenue and expenditure statements, to evaluate financial performance vs. budget for the period.

ENVIRONMENTAL IMPROVEMENTS to the GREENSPACE: Measures of elimination of noxious weeds, maintenance of lawn and pruning of shrubs and trees, health of new trees, shrubs and plants.

PUBLIC SUPPORT and USEAGE of the GARDEN: A higher proportion of visitors, school children, programmed activities, and participation by residents of all ages.

PRESERVATION of the HERITAGE VALUE: The detailed rehabilitation plan defined by the Contractor and the work completed largely according to the plan, with protection of the original vision and concept as a celebratory memorial.

COMMUNITY APPRECIATION of the IMPROVEMENT: Rededication of the Centennial Garden with an appropriate ceremonial event, media coverage, magazine articles and community publicity.

The ultimate measure of success will be whether the investment in the Centennial Garden will have successfully transformed it from a neglected, derelict sculpture in the heart of the Village Green to a pleasurable park and revived cultural landmark.



14.0 RISKS AND CHALLENGES MITIGATION

One challenge of the rehabilitation might be the ability of the Rockcliffe Park Foundation to raise 50% of the rehabilitation cost from other levels of government, organizations and foundations, and the private sector. Because of wide-spread support that has already been expressed from diverse communities this is not expected to be a major problem. It is possible that the number of visitors to the site does not increase as much as expected. The Rockcliffe Park Foundation will use all the means at its disposal to mitigate this possibility, for example, by booking events in the Village Green, by continuing media coverage. Vandalism is always a possibility, but the risk is mitigated when a place demonstrates that it is valued and cared for.

APPENDICES

- A. Preliminary Plan for Rehabilitation of Centennial Garden
- B. Estimated Cost of Construction, Davis Landscaping
- C. Biography of Humphrey Carver
- D. Biography of Gerald Lajeunesse
- E. Biography of Linda Dicaire
- F. Statement by Principal of Rockcliffe Park Sc



APPENDIX A. PRELIMINARY PLAN FOR THE REHABILITATION OF THE CENTENNIAL GARDEN

Fellows of the Canadian Society of Landscape Architects, and both with extensive experience with heritage landscaping, developed the following plan for a sensitive rehabilitation of the Centennial Garden. Their plan was endorsed by Rockcliffe’s two community groups – the Rockcliffe Park Foundation and the Rockcliffe Park Residents Association.

The Vision for the Centennial Garden

Humphrey Carver, along with his friends, created the Centennial Garden in 1967 to celebrate Canada’s centennial, using local materials with boulders and rocks from the site. This work of art consists of a large circle, approximately 90 feet in diameter, defined by large field stones carefully integrated with plant material around its edges, and at the center of the circle two large boulders – a likely reference to the two Canadian territories that existed at that time. The main body of the circle is divided into 10 rays or ‘pie shapes’ radiating out from the center, in two concentric circles, making up 20 sections which contain alternating, contrasting surfaces of pebble (river stone), flagstone, and chip (replaced with asphalt over time). The number 10, surely a reference to our 10 Canadian provinces, is repeated in the number of sugar maples that complete the work. Five of the trees were planted within the rock circle, five on the outside.

Condition of Centennial Garden Today

The site has received virtually no maintenance since it was built in 1967 and is in a state of disrepair. Winter snow clearance without guidance has resulted in a pathway being plowed right across the middle, transecting the site, causing damage to the paving stones and to the five memorial benches which circle the site. The plow has sometimes hit the benches, hooked and lifted surface material from the center of the circle, and in early spring compaction by heavy equipment combined with the freeze-thaw cycle have damaged surfaces. As a result, benches and paving stones have been damaged so badly that the City has had to have some of them repaired or rebuilt. Uneven surfaces have resulted in unsafe and uncomfortable walking with tripping hazards. Of the 10 sugar maples initially planted only five remain. Burdock, goutweed, quack grass, European buckthorn, and other invasive species are taking over inside and outside the circle.

Pathway and Winter Plowing

Until recently, a snowplow provided a shortcut diagonally across the Village Green from Mariposa to the northern end of Springfield. It caused significant damage each year. A plowed short cut can be maintained by bypassing the decorative Stone Circle entirely with a new path along the southwest side of the Centennial Garden. It would be 4’ wide, the same width as the existing paths, and its inner edge would be about 24’ from the outside edge of the decorative stone inner circle. This new path would be continued around the northeast side of the stone sculpture completing 360 degrees, if so desired.

Decorative Paving Stones around Central Boulders

It is recommended that the pie-shaped pattern of ten alternating flagstone, river stone, and chip surfaces, as envisaged by Humphrey Carver and his design committee, be reinstated. The sections now in asphalt (which was introduced later) should be replaced with cast-in-place



concrete with exposed aggregate, to resemble the original chip finish. Concrete would provide a longer and more satisfactory life span than asphalt surfacing, without sacrificing the original design. It is recommended that the concrete be scored with lines emanating from the central boulders. De-icing agents would not be used in winter as these damage surfaces and plant material. The large boulders at the center would sit on a circle of river stone about 8 feet in diameter, similar to part of the original design.

The foundation on which the present surface rests may suffice so that more sub grade matter may not be necessary, but this will need to be assessed further. Where possible, existing in situ materials would be used. It is hoped that the small river stones and some of the flagstones which currently form part of the paving might be reused.

The decorative river stone/flagstone/concrete covering in the center forms part of the commemorative sculptural entity and should only be accessed by pedestrian traffic. No vehicles and heavy maintenance equipment should be permitted in and on this space at any time after its renovation.

It is also recommended that the five pathways providing access to the Centennial Garden align with the narrower of the five pie shapes in the decorative paving.

Restoration of Lost Maple Trees

Four of the five sugar maples planted inside the Centennial Garden have died and been cut down. One in the later stages of its life cycle remains. It is recommended that this tree be removed and that the areas where the five trees once stood be covered in decorative stone. The essence of Carver's plan will be maintained by locating five sugar maples outside the ring of boulders far enough away from the Centennial Garden that their roots will not damage the decorative paving and inside the new asphalt path. The other five sugar maples would be located outside the new asphalt path thus respecting Carver's plan of a Centennial Garden encircled by 10 maples. Four of the original maples in the outside ring are still in good condition. This would mean planting six new sugar maples.

Central Boulders

Although no reference in the literature exists to the two central boulders representing Canada's two territories, that is how they have come to be interpreted which is understandable considering that the garden was built to celebrate Canada's Centennial and there were only two territories at the time. It is recommended that a third medium-sized boulder, taken from somewhere on the property, be added to better reflect our existing geo-political map.

Benches

Five memorial benches are now situated on top of the decorative paving in the Centennial Garden. Although the City has restored the benches, they are still in rough shape. One of the original memorial plaques has been lost. It is recommended that the five benches be repurposed outside the circle in the Village Green and that a new 360-degree circular bench be built, with openings for each of the five pathways to provide access to the inner circle. The new bench should be constructed of noble material such as stone, high quality metal or wood. The



new bench would abut the outer edge of the decorative paving. A circular bench would reinforce the sense of Centennial Garden and the cyclical nature of life.

Lighting

Security in public parks is always an issue. It is recommended that soft lights wash upwards over the three boulders, as well as six from the underside of the new circular bench. An electrical line from a nearby light could be threaded below ground and would provide enough power to operate LED lights.

Outer Ring of Boulders

A ring of boulders interwoven with plant material surrounds the decorative Centennial Garden. It is recommended that this ring abut the outer edge of the circular bench and that the boulders and plant material decrease in height as one moves away from the circle. A planting such as this would serve as a partial screen and create a sense of drama and surprise when entering the circle. Arrangement of plants and shrubs should appear to be natural, not structured. Plant material would include yews, hostas, lesser periwinkle and other shade tolerant plants and shrubs. It is recommended that an opening in the ring of boulders leading to the pathway to the Jubilee Garden be enlarged to connect these two complementary gardens. It is also recommended that the metal pinecone sculptures by sculptor Floyd Elzinga which now block the visual pathway between the two gardens be moved south and that one or more young pine trees be planted near them to better illustrate Elzinga's theme of Regeneration. The dedication stone should also be moved to be closer to the pinecones.

Surrounding Green Space

The Ottawa Garden Club, with members from across Ottawa, has offered to assist in the rehabilitation of this area by contributing and planting hostas.

Maintenance

Markers to guide the snowplow should be erected every fall and removed in spring along the shortcut which transects the Village Green and into the openings of Centennial Garden to prevent any temptation for equipment to enter the inner Centennial Garden.

Communication

A series of articles on the renovation of The Centennial Garden has appeared and will continue to appear in the Rockcliffe Park Newsletter. The purpose of these articles is to spark interest and inspire support for the project.

Once built, it is recommended that background information on the Centennial Garden be included on the websites of the Rockcliffe Park Residents Association, the Village of Rockcliffe Park Foundation, and in City of Ottawa tourism material. The intention is to seek out media coverage that would celebrate the garden, its history, and its renovation, from multiple media outlets, and to ensure that the Centennial Garden is included on lists of important Canadian cultural and historic sites to visit in Ottawa.



Sponsorship Recognition

In order to recognize supporters of The Centennial Garden rehabilitation, their names will be posted on the Rockcliffe Park Foundation website, included in news releases, social media, newsletter articles and speeches.

Grand Rededication of Centennial Garden

A grand re-opening should be held. The initial party in 1967 to inaugurate the Centennial Garden was attended by Governor General Roland Michener, Prime Minister Lester Pearson, former Prime Minister George Diefenbaker, and their wives, as well as several hundred Rockcliffe residents. A similar high-profile inauguration event is recommended for the opening of the new, renovated Centennial Garden. We plan to invite our Governor General Mary Simon to rededicate the Centennial Garden and celebrate the addition of the third boulder representing Canada's third territory. Our City Councillor, the Mayor of Ottawa, Federal members of Parliament, Provincial MPPs of the riding, and Ambassadors and High Commissioners residing in Rockcliffe will be invited to attend.



**APPENDIX B. ESTIMATED COST OF CONSTRUCTION AND MAINTENANCE BY
DAVIS LANDSCAPING**



M. Davis Landscape & Design Inc.

3000 Rushmore Rd., RR#2, Richmond, Ontario K0A 2Z0 Tel: 613-838-8744
Fax: 613-838-5779

January 9, 2023

Village of Rockliffe C/O

Jane Panet
5 Pond Street Rockliffe, ON K1L 8J1

RE: UPGRADE OF THE CENTENNIAL GARDEN

M. Davis Landscape & Design Inc. has been contacted to provide a preliminary costing

on the upgrade of the Centennial Garden.
This Business Pla is based on a conceptual landscape design attached.

Final pricing would occur once approved detailed landscape drawings issued for construction has been provided by a qualified landscape architect and approved by the City of Ottawa.

We have carried a 10% contingency amount on each breakdown.
One visit of a private locator is included for all Utilities not covered by public locators

We would like to take this opportunity to thank you for allowing us to provide this cost proposal and look Forward to working with you further on this project.



Michael Lang

**M. Davis Landscape & Design Inc. 3000 Rushmore Road
Richmond, ON
K0A 2Z0**



Surrounding Greens Space Upgrade

Remove Old Juniper Shrubs at the Corner of Mariposa and Springfield, Top Dress and Seed. Remove weeds and suckers from two beds along Mariposa, Top Dress and Seed.

- 1. Supply all equipment and labour required to excavate and remove old shrubs, +/- 100mm to 150mm depth of soil. Includes all disposal fees and haulage.
- 2. Supply all equipment and labour required to excavate and remove weeds and suckers, +/- 100mm to 150mm depth of soil. Includes all disposal fees and haulage.
- 3. Supply all equipment, labour and materials required to install +/- 100mm to 150mm depth of F-8021 City of Ottawa Spec Soil for new seed bed.
- 4. Supply all equipment, labour and material required to install DLF Pickseed Eco-Turf Grass Seed.
- 5. Supply all equipment, labour and materials required to reinstate all work areas.

Total: \$23,985.00 + HST

Restoration of Lost Maple Trees

- 1. Supply all equipment, labour and materials required to install six (6) Acer saccharum /Sugar Maple 60mm trees. Includes a two-year replacement and maintenance warranty.
- 2. Supply all equipment, labour and materials required to reinstate all work areas.

Total: \$4,800.00 + HST

New Asphalt Pathway Layout

- 1. Supply all equipment and labour required to remove any existing asphalt to facilitate installation of new pathway layout. Includes all disposal fees and haulage.
- 2. Supply all equipment, labour and materials required to install a 200mm compacted Granular A base with a woven geotextile.
- 3. Supply all equipment, labour and materials required to install 50mm of HL3 Asphalt.
- 4. Supply all equipment, labour and materials required to reinstate all work areas.

Total \$39,160.00 + HST

Pedestal Bench with Concrete

- 1. Supply all equipment, labour and materials required to install 150mm depth of reinforced concrete with sand blasted finish to expose interior aggregate for outer circle
- 2. Supply all equipment, labour and materials required to install thirty (30) Maglin Ogden Radius Range 8 WFB 366 in Backless IPE Wood Benches with surface mount pedestals.
- 3. Supply all equipment, labour and materials required to reinstate all work areas.

\$155,520.00 + HST



Electrical

1. Supply all equipment and labour required to excavate an electrical trench 675mm in depth and 600mm wide for new proposed conduit. Includes all disposal fees and haulage fees.
2. Supply all equipment, labour and materials required to install 1" PVC Conduit for nine (9) new fixture locations. Includes 1" PVC Conduit, PVC Glue, Non-Spec sand for trench backfill and Danger Tape as per ESA Rule 12-012. Includes for one inspection of conduit.
3. Supply all equipment, labour and materials required to reinstate all work areas.

\$8,465.00 + HST

Large Landscape Circle Sculpture Wet Laid

1. Supply all equipment and labour required to remove the existing asphalt, flagstone, stone and excavate for new granular base depths as required. Includes all disposal fees and haulage.
2. Supply all equipment and labour to remove one tree from the location including the roots and the roots for four other trees previously removed. Includes all disposal fees and haulage.
3. Supply all equipment and labour required to excavate and remove any material to create an opening in the stone circle to give access to the pathway to the Jubilee Gardens. Includes all disposal fees and haulage.
4. Supply all equipment, labour and materials required to install a 300mm compacted Granular B base with a woven geotextile.
5. Supply all equipment, labour and materials required to install a 150mm compacted Granular A.
6. Supply all equipment, labour and materials required to install 150mm reinforced concrete base for Flagstone and Riverstone.
7. Supply all equipment, labour and materials required to install 50mm Granite Random Flagstone 4-8 sq. ft sizing, Granite Riverstone 2" to 5" with Mortar Bed and Mortared Joints.
8. Supply all equipment, labour and materials required to install 150mm of Granite 1" to 3" for Center Circle.
9. Supply all equipment, labour and materials required to install 150mm depth of reinforced concrete with sand blasted finish to expose interior aggregate for areas identified as concrete.
10. Add shade tolerant shrubs, perennials and groundcover to the stone circle as identified in concept drawing L4.
11. Supply all labour, equipment and materials required to reinstate the 2 large rocks in the stone circle which were displaced in the course of the work.
12. Supply all labour, equipment and materials required to install 1 large rock in the stone circle from the site to create three (3) large stones.
13. Supply all labour, equipment and materials required to install 13 medium to large landscape rocks in the landscape circle from the site.
14. Supply all labour, equipment and materials required to move Pinecone Sculptures south of the pathway connecting the Centennial Garden and the Jubilee Garden.
15. Supply all equipment, labour and materials required to install 100mm depth of SPM Mulch to outer planting beds.
16. Supply all equipment, labour and materials required to reinstate all work areas.

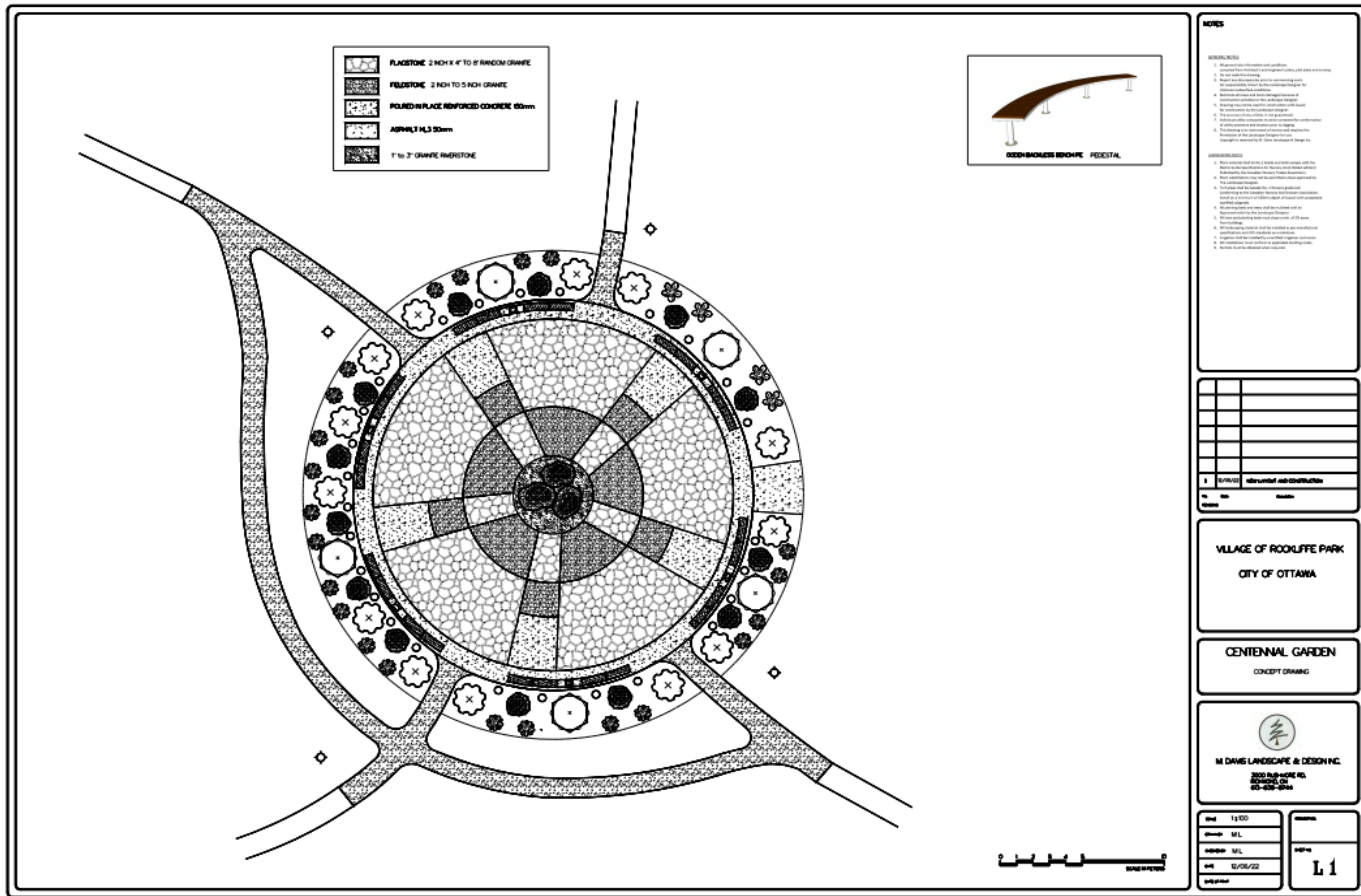
Total \$610,475.00 + HST

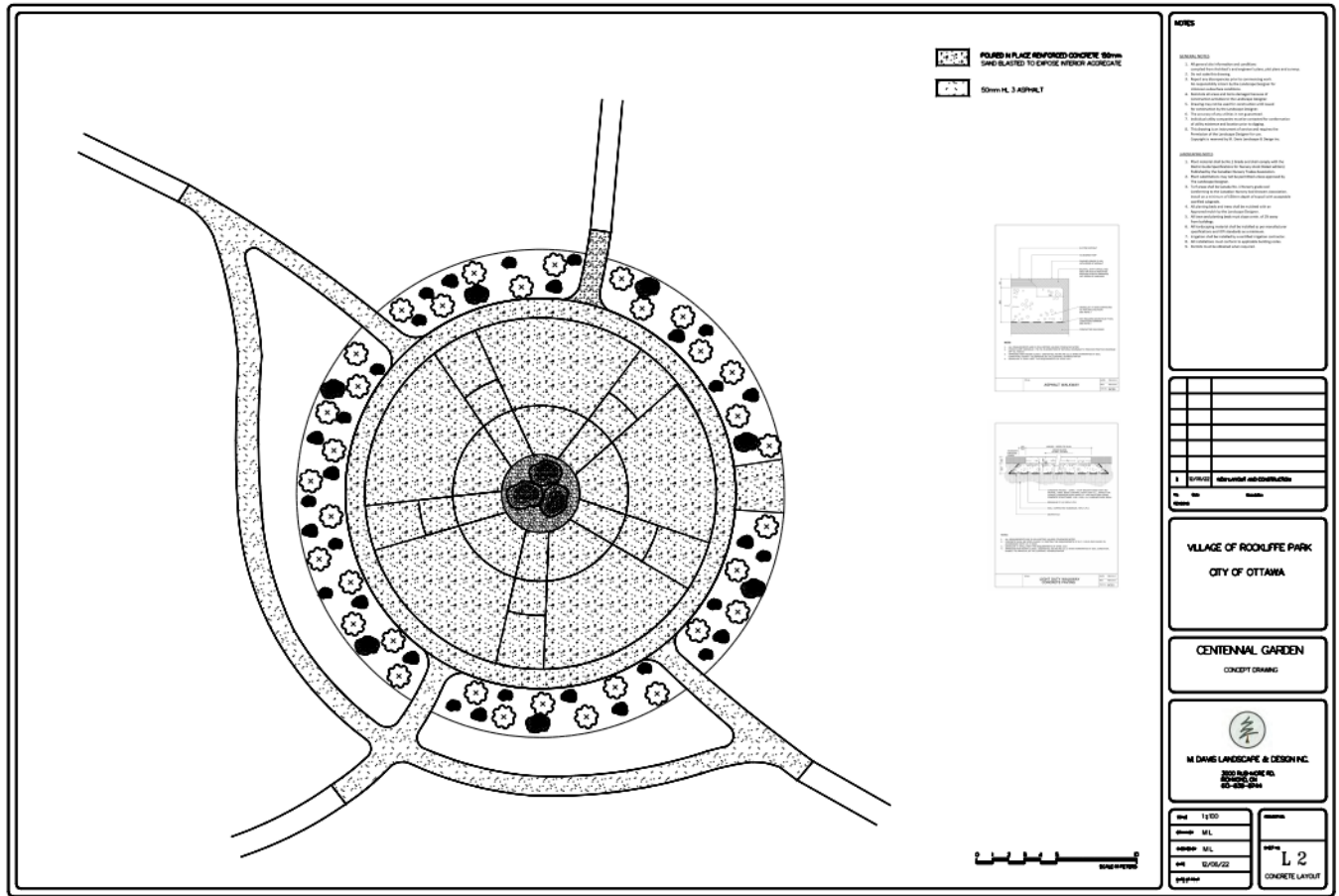
Community Partnership Major Capital Program Application The Centennial Garden Rehabilitation Project

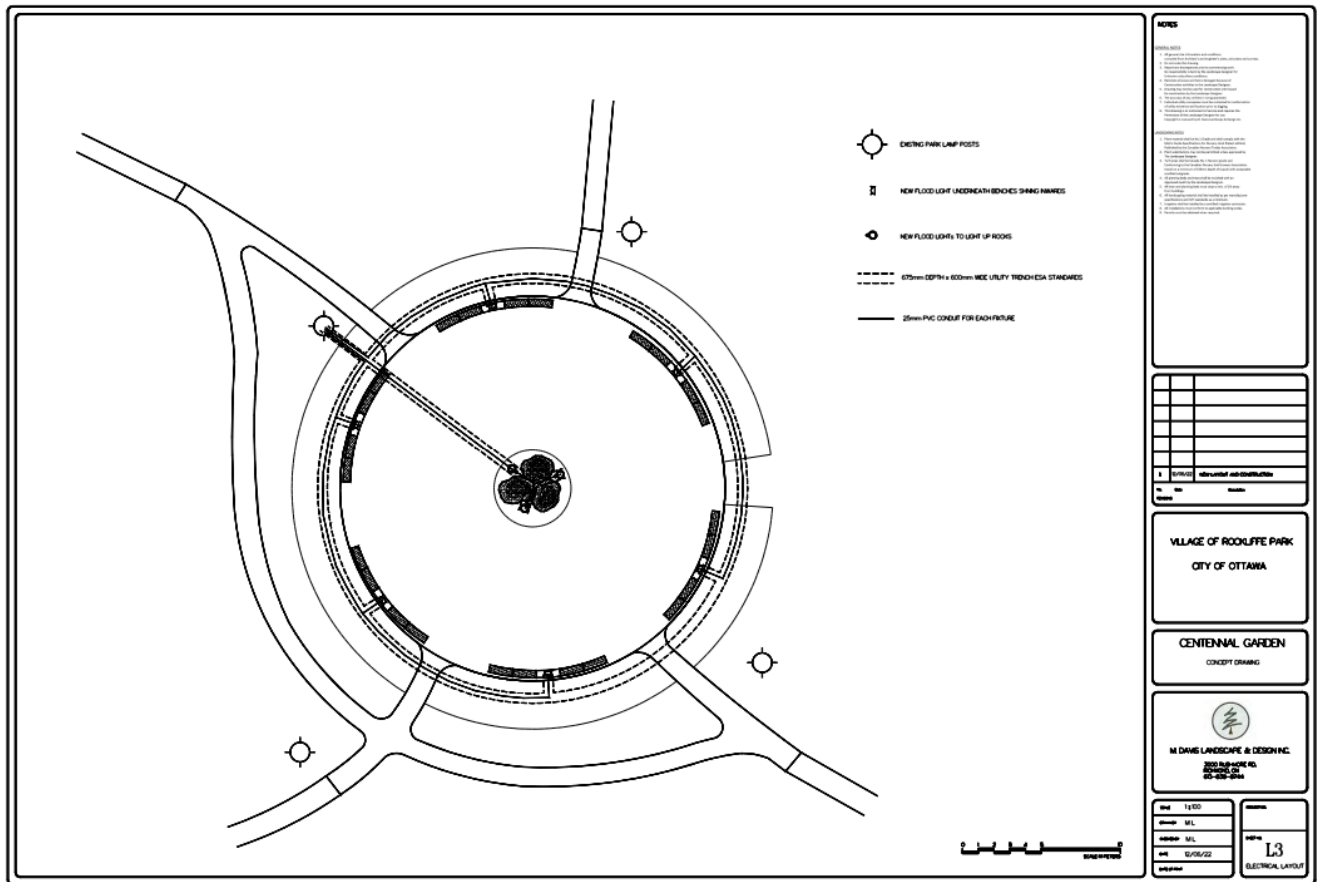


Please Note:

- 1) HST is extra.
- 2) Pricing based on non-union labour and equipment rates.
- 3) No excavation or removals included unless noted above.
- 4) All sub grade preparation below our work and materials is by others.
- 5) Excavation where included is based on conditions that allow for regular mechanical digging only. (No rock breaking, hydrovac excavation, tree stump or large boulder removal.
- 6) Any excavation within 1m of underground utilities will require hydrovac excavation and is an extra cost to this quote. This will be determined by underground locates prior to excavation and will be quoted at an hourly rate for hydro excavation.
- 7) Testing and approvals if required by a professional engineer is extra to this proposal.
- 8) No electrical hook up, wiring, fixtures and labour included.
- 9) Winter conditions if required are not included.
- 10) No addenda included.
- 11) Due to COVID 19 delays, cost increases or fuel surcharges that are beyond our control, will need to be reviewed and assessed on an individual basis with the client and could result in increased costs or time delays to this project.









Specifications

Terrafix 200R - Geotextile

Function: Filtration & Drainage.

Terrafix 200R is a needle-punched nonwoven geotextile made of 100% virgin polypropylene staple fibers, which are formed into a random network for dimensional stability. Terrafix 200R resists ultraviolet deterioration, rotting, biological degradation, naturally encountered alkalis and acids. Polypropylene is stable within the pH range of 2-13.

Types of applications for 200R are: Subdrains, French Drains, Foundation Drains, Trench Drains, Blanket Drains.

200R provides good lateral drainage and is suitable for a wide spectrum of soil permeabilities.

Property	ASTM Test Method	Value Metric Units
Typical Geotextile Properties		
• Grab Tensile Strength	D 4632	401 N
• Grab Elongation	D 4632	50%
• Tear Resistance	D 4533	170 N
• Puncture CBR	D 6241	1180 N
• Permittivity	D 4491	2.00 sec ⁻¹
• Water Flow	D 4491	6095 l/min/m ²
• Apparent Opening Size	D 4751	0.300 mm
• U.V. Stability	D 4355	70% @ 500hrs

The information contained herein has been compiled by TAG Ltd. and is, to the best of our knowledge, true and accurate. This information is offered without warranty. Final determination of suitability for use contemplated is the sole responsibility of the user. This information is subject to change without notice. Terrafix is a registered trademark of Terrafix Geosynthetics Inc. Terrafix 04-2018.

Community Partnership Major Capital Program Application The Centennial Garden Rehabilitation Project



ITEM	QTY	DESCRIPTION	MODELNUMBER	APPROVED BY:
1	1	OGDEN, RADIUS RANGE 8, WFB-366 IN	OGM1900-SCR8-WFB-366	
2	2	OGDEN, PEDESTAL LEG	OGM1900-MS2	DATE:

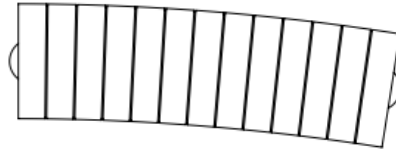


 <p>MAGLIN SITE FURNITURE WWW.MAGLIN.COM TEL.: 800-716-5506 FAX: 877-260-9393</p>	<p>THE INFORMATION CONTAINED IN THIS DRAWING IS THE SOLE PROPERTY OF MAGLIN SITE FURNITURE. ANY REPRODUCTION IN PART OR AS A WHOLE WITHOUT THE WRITTEN PERMISSION OF MAGLIN SITE FURNITURE IS PROHIBITED.</p>	TITLE:	DATE:
		OGDEN, CURVED, IPE, PEDESTAL LEG	2022-11-28
		MODEL NO:	SHEET:
		OGM1900-191241	1 OF 3



1. BENCH(ES) ONLY

61.26" [1556 mm] LENGTH X 22.49" [571 mm] WIDTH X 18" [457 mm] HEIGHT



* SEE FOLLOWING PAGE(S) FOR DIMENSION CHART(S), NUMBER(S) OF BOARDS FOR SECTION(S) MAY DIFFER BASED ON ANGLE(S)

 <p>MAGLIN SITE FURNITURE WWW.MAGLIN.COM TEL: 800-716-5506 FAX: 877-260-9393</p>	<p>THE INFORMATION CONTAINED IN THIS DRAWING IS THE SOLE PROPERTY OF MAGLIN SITE FURNITURE. ANY REPRODUCTION IN PART OR AS A WHOLE WITHOUT THE WRITTEN PERMISSION OF MAGLIN SITE FURNITURE IS PROHIBITED.</p>	<p>TITLE: OGDEN, CURVED, IPE, PEDESTAL LEG MODEL NO: OGM1900-191241</p>	<p>DATE: 2022-11-28 SHEET: 2 OF 3</p>
------------------------------------------------------------------------------------------------------------------------------------------------------------------------------------------------------------	---------------------------------------------------------------------------------------------------------------------------------------------------------------------------------------------------------------	----------------------------------------------------------------------------------------------------------------	------------------------------------------------------------------------------





APPENDIX C: BIOGRAPHY OF HUMPHREY CARVER by Martha Edmond

Humphrey Carver was an internationally acclaimed architect, planner, and author. Born in England in 1902 he came to Canada in 1930 and would become a major force in public housing policy. In the post-war years, he helped guide the federal government's revival of Canadian community planning and transformation into a suburban nation. He was educated at Oxford University and the Architectural Association School of Architecture in London and was greatly influenced by Le Corbusier and the Garden City Movement.

Soon after his arrival in Canada, Carver became a strong advocate for affordable housing and community planning. His early years in Toronto turned him into a social activist. He practiced landscape architecture with Carl Borgstrom (with whom he helped found the Canadian Society of Landscape Architects and Town Planners in 1934), taught at the University of Toronto School of Architecture and launched its first housing course in the School of Social Work in 1946. He was associated with Regent Park North in Toronto, Canada's first low-rent, public housing project, and began a prolific writing career with his first publication, *Houses for Canadians*.

By 1937, he had emerged as one of Canada's leading advocates for housing reform and a national housing program. He gave numerous speeches, ran a CBC Radio series, and organized conferences on housing and planning, including the ground-breaking 1939 Housing Conference.

Carver came to Ottawa in 1948 to work for the then Central Mortgage and Housing Corporation. Under his leadership of its Advisory Group from 1955 to his retirement in 1967, he advocated for an interdisciplinary approach to urban problems and oversaw programs that funded the establishment of planning schools and scholarships, with millions of dollars made available for planning research and studies. In those years, Canada's housing policy and community planning would achieve an international reputation. His focus turned toward planning suburbs, to make the new suburban landscape more compassionate and hospitable for a booming post-war population. It was an attempt to break away from the "standard rectangles" of land subdivision and "the tedium of the mass-produced city" to produce communities arranged around the social patterns of families and their lives. He offered a unique vision of how cities could develop in a humane and rational way in his *Cities in the Suburbs* (1962). He was a founding member of the Community Planning Association of Canada in 1947, president of the Town Planning Institute of Canada (now the Canadian Institute of Planners) from 1963 to 1964, and a vice-president of the American Society of Planning Officials.

For many years, Carver lived in the Village of Rockcliffe Park, which he discovered by accident one day on a walk along the Ottawa River. He would develop a strong attachment to the community. As described in his memoir, *Compassionate Landscape* (1975), it was a place he felt had "never lost its woodland character" with its houses "tucked in between the trees." The Village provided him with inspiration, a perfect retreat for contemplation and reflection. In turn, he provided advice on its conservation and development, designing walkways and paths, analyzing its distinctive cultural heritage landscapes, and creating urban spaces and parkland—areas that embodied many of his thoughts on the role of landscape in an urban setting. He returned to a renewed love for the natural landscape, and the relationship between suburbs and nature became a persistent theme for Carver later in life.



His work has been acknowledged with many awards, among them the Order of Canada (1988). He died in 1995 in his beloved community, where his name is honored in the Caldwell-Carver Conservation Area. The Centennial Garden, a surviving work of Carver's, is accessible to the public and can still be seen and appreciated today. It is a lasting symbol of the man and his vision, and a legacy that we are now entrusted with.

APPENDIX D: Biography of Gérald Lajeunesse

Gérald Lajeunesse, B.Sc., B.A.P., FCSLA. A native of Ottawa, Gérald first studied at Carleton University, and subsequently completed a second degree at l'Université de Montréal. He completed his long career at the National Capital Commission (NCC), as Chief Landscape and Project Director. A member of the OALA, AAPQ, ASLA, a Fellow of the CSLA and recipient of the Governor General Medal for Volunteers, his accomplishments span over three decades of Landscape Architecture and Urban Design. He has participated on several juries dealing with design and public art and continues to be involved in his community. Most recently Gérald has been actively involved with the Canadensis Botanical Garden Society (CBGS), as the Chair of the Board of Directors. Contributing to the enhancement of the quality of life of his community has been his lifelong passion.

APPENDIX E: BIOGRAPHY OF LINDA DICAIRE

Linda Dicaire, honoured as Fellow of the Canadian Society of Landscape Architects, runs her own design and conservation practice. For the National Capital Commission, Parks Canada, and Public Works and Government Services Canada, she influenced hundreds of design projects on cultural landscapes and national landmarks from the National Gallery of Canada to Parliament Hill, and from the Yukon to PEI. As Chair of the RPRA Heritage Committee, with committee members, helps orient design projects in the Rockcliffe Park Heritage Conservation District. She assisted in the conservation of the Birkenfels Gates in the Jubilee Gardens and is the designer of the 4-acre (1.6 ha) Vimy Foundation Centennial Park, Vimy Ridge, France, which enjoys new phases including a Peace Bench designed by Linda to be inaugurated in November 2022, and which was visited by the Prime Minister of Canada in 2018. Co-author of a chapter in the 2021 book A Portrait of Canada's Parliament.



APPENDIX F: STATEMENT BY PRINCIPAL OF ROCKCLIFFE PARK SCHOOL

HEATHER MACE, Principal, Rockcliffe Park Public School

At RPPS, we greatly appreciate the adjacent space with the Centennial Gardens. We have accessed the space numerous times, both for staff and for students. For staff, we have held outdoor meetings in circles under the trees as part of the wellness work to support our staff through the pandemic. We are also not able to meet in-person and the setting allows us to gather together. It gives us time to be mask free.

For students, our staff have adopted Forest Learning. In fact, Centennial Garden is one of the outdoor learning spaces that our staff have identified for use by our classes. We received special permission from the District to use the space for field trips throughout the pandemic, even though all field trips were canceled at other schools. Forest School is not so much a place, but an approach to learning that puts students in the driver's seat. Through regular and repeated access to a woodland, students observe, explore, ask questions, build, discover, and make connections to the natural world. At Forest School, the curriculum is emergent, flowing from what interests the students. You may have seen our students climbing, on zip lines, or on ropes courses that our outdoor educators support while they are scheduled to support us. More than just a one-off field trip, students are provided with an opportunity to build an on-going relationship with their peers, the educators, the land, and themselves through their experiences at Forest School. This article offers a description of what learning looks like during a typical day at Forest School: Into the Woods: Rain or Shine.

RPPS classes access the space often for this purpose, whether on a scheduled Forest School Day with the support of outdoor learning educators, or as part of an outdoor inquiry. You may have also seen our little kindergarten students who gather sticks in the area as part of literacy – they use the sticks to create natural letters. They have also used the space to gather leaves to create "live graphs" on the different colours of leaves by organizing them in piles. They learn about the concept of time and volume by filling buckets with leaves and timing how long it takes. Along with our school grounds, the Centennial Garden is one of the features which makes Rockcliffe Park PS a diverse learning environment, and we greatly appreciate being able to use it on a regular basis.

I hope these examples help for now, and please let me know if there is further information I can provide.

Regards,
Heather Mace
Heather A. Mace (she / her)
Principal - Rockcliffe Park PS
613-749-5387
heather.mace@ocdsb.ca

"You can't change the direction of the wind, but you can adjust your sails to reach your destination"

Heather Mace

**Community Partnership Major Capital Program Application
The Centennial Garden Rehabilitation Project**

